

HS 72F50



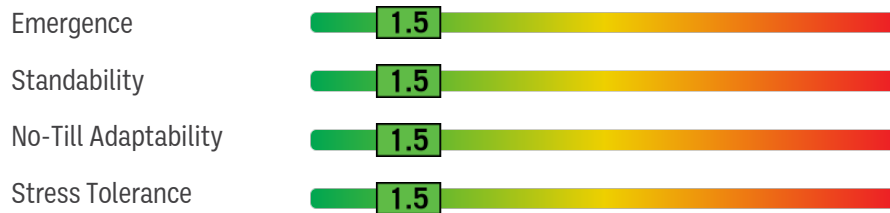
RM | 7.2

NEW

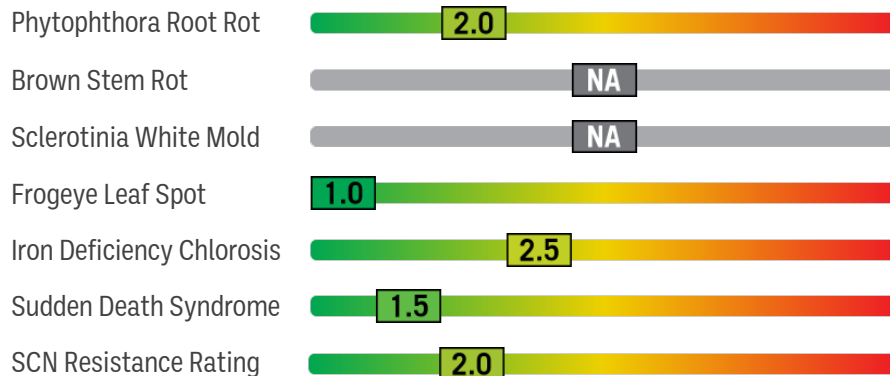
GROUP 7 PERFORMANCE

- » Determinate line with strong performance on both irrigated and dryland acres
- » Handles all types of yield environments
- » Excellent emergence with Stem Canker and Root Knot Nematode resistance
- » Top-notch Frogeye Leaf Spot and Sudden Death Syndrome tolerance

AGRONOMICS



DISEASE RESISTANCE



Rating Scale: 1 - 5, 1 = Excellent, 5 = Poor, NA = Not Available, NR = No Rating

DISEASE RESISTANCE

SCN Resistance Source **PI88788**

Phytophthora Root Rot Gene **None**

CHARACTERISTICS

Flower Color **White**

Pubescence Color **Tawny**

Hilum Color **Black**

Pod Wall Color **Tan**

Growth Habit **Determinate**

Plant Height **Tall**

Canopy Type **Medium-Bush**

Southern Root Knot Nematode **Resistant**

Southern Stem Canker **Resistant**



No dicamba may be used in-crop with seed with Roundup Ready® Xtend Technology, unless and until approved or specifically permitted. No dicamba formulations have been registered for such in-crop use at the time this material was published. Please follow <https://www.roundupreadyxtend.com/pages/xtendimax-updates.aspx> for status updates.

Bayer is a member of Excellence Through Stewardship® (ETS). Bayer products are commercialized in accordance with ETS Product Launch Stewardship Guidance, and in compliance with Bayer's Policy for Commercialization of Biotechnology-Derived Plant Products in Commodity Crops. Commercialized products have been approved for import into key export markets with functioning regulatory systems. Any crop or material produced from this product can only be exported to, or used, processed or sold in countries where all applicable regulatory approvals have been granted. It is a violation of national and international law to move material containing biotech traits across boundaries into nations where import is not permitted. Growers should talk to their grain handler or product purchaser to confirm their buying position for this product. Excellence Through Stewardship® is a registered trademark of Excellence Through Stewardship.

ALWAYS READ AND FOLLOW PESTICIDE LABEL DIRECTIONS.

It is a violation of federal and state law to use any pesticide product other than in accordance with its labeling. NOT ALL formulations of dicamba or glyphosate are approved for in-crop use with Roundup Ready 2 Xtend® soybeans. NOT ALL formulations of dicamba, glyphosate or glufosinate are approved for in-crop use with products with XtendFlex® Technology. ONLY USE FORMULATIONS THAT ARE SPECIFICALLY LABELED FOR SUCH USES AND APPROVED FOR SUCH USE IN THE STATE OF APPLICATION. Contact the U.S. EPA and your state pesticide regulatory agency with any questions about the approval status of dicamba herbicide products for in-crop use with products with XtendFlex® Technology.

Roundup Ready® 2 Technology contains genes that confer tolerance to glyphosate. Roundup Ready 2 Xtend® soybeans contain genes that confer tolerance to glyphosate and dicamba. Products with XtendFlex® Technology contains genes that confer tolerance to glyphosate, glufosinate and dicamba. Plants that are not tolerant to glyphosate may be damaged or killed if exposed to those herbicides. Plants that are not tolerant to glyphosate, dicamba, and/or glufosinate may be damaged or killed if exposed to those herbicides. Plants that are not tolerant to dicamba may be damaged or killed if exposed to those herbicides. Contact your seed brand dealer or refer to the Bayer Technology Use Guide for recommended weed control programs.

Seed containing a patented trait can only be used to plant a single commercial crop. It is unlawful to save and replant Roundup Ready 2 Yield® soybeans, Roundup Ready 2 Xtend® soybeans, and XtendFlex® soybeans. Additional information and limitations on the use of these products are provided in the Technology Stewardship Agreement and the Bayer Technology Use Guide: tug.bayer.com. U.S. patents for Bayer technologies can be found at the following webpage: cs.bayerpatents.bayer.com

Acceleron®, Roundup Ready 2 Xtend®, Roundup Ready 2 Yield®, Roundup Ready® and XtendFlex® are registered trademarks of Bayer Group. LibertyLink logo® and LibertyLink® are trademarks of BASF Corporation.



Seeds containing the PowerCore® Enlist®, PowerCore® Enlist® Refuge Advanced®, Enlist® Corn - REFUGE and Enlist E3® traits are protected under one or more U.S. patents which can be found at www.traitstewardship.com. The purchase of this traited seed includes a limited license to produce a single crop in the United States. The use of seed from such a crop and/or the progeny thereof for propagation or seed multiplication or for production or development of a hybrid or different variety of seed is strictly prohibited. You acknowledge and agree to be bound by the terms and conditions of the following documents in effect at the time of planting of this seed: (i) the Corteva Agriscience Technology Use Agreement and (ii) the Product Use Guides for all technologies in this seed, including the Herbicide Resistance Management (HRM), and Use requirements. To plant PowerCore Enlist, PowerCore Enlist Refuge Advanced, Enlist Corn - REFUGE and Enlist E3 seed, you must have a limited license from Corteva Agriscience (or other appropriate affiliates). In consideration of the foregoing, Corteva Agriscience grants to the Grower a limited license to use its technology to produce only a single commercial crop in the United States under the terms and conditions set forth in the Technology Use Agreement in effect at the time of planting of this seed.

Enlist E3® soybean seeds containing the Enlist® trait can only be used to plant a single commercial crop. It is unlawful to save and replant Enlist E3 soybeans. Additional information and limitations on the use of these products are provided in the Corteva Agriscience Technology Use Agreement and Enlist® Soybean Product Use Guide. U.S. patents for Corteva Agriscience technologies can be found at www.corteva.us/Resources/trait-stewardship.html.

Corteva Agriscience is a member of Excellence Through Stewardship® (ETS). Corteva Agriscience products are commercialized in accordance with ETS Product Launch Stewardship Guidance and in compliance with the Corteva Agriscience policies regarding stewardship of those products. In line with these guidelines, our product launch process for responsible launches of new products includes a longstanding process to evaluate export market information, value chain consultations, and regulatory functionality. Growers and end-users must take all steps within their control to follow appropriate stewardship requirements and confirm their buyer's acceptance of the grain or other material being purchased. For more detailed information on the status of a trait or stack, please visit www.biotradestatus.com. Excellence Through Stewardship® is a registered trademark of Global Stewardship Group.

Following burndown, Enlist Duo® and Enlist One® herbicides with Colex-D® technology are the only herbicides containing 2,4-D that are authorized for preemergence and postemergence use with Enlist® crops. Consult Enlist® herbicide labels for weed species controlled. Enlist Duo and Enlist One herbicides are not registered for use or sale in all states and counties; are not registered in AK, CA, CT, HI, ID, MA, ME, MT, NH, NV, OR, RI, UT, VT, WA and WY; and have additional subcounty restrictions in AL, GA, TN and TX, while existing county restrictions still remain in FL. All users must check "Bulletins Live! Two" no earlier than six months before using Enlist One or Enlist Duo. To obtain "Bulletins," consult epa.gov/espp/, call 1-844-447-3813, or email ESPP@epa.gov. You must use the "Bulletin" valid for the month and state and county in which Enlist One or Enlist Duo are being applied. Contact your state pesticide regulatory agency if you have questions about the registration status of Enlist® herbicides in your area. ALWAYS READ AND FOLLOW PESTICIDE LABEL DIRECTIONS. IT IS A VIOLATION OF FEDERAL AND STATE LAW TO USE ANY PESTICIDE PRODUCT OTHER THAN IN ACCORDANCE WITH ITS LABELING. ONLY USE FORMULATIONS THAT ARE SPECIFICALLY LABELED FOR SUCH USE IN THE STATE OF APPLICATION. USE OF PESTICIDE PRODUCTS, INCLUDING, WITHOUT LIMITATION, 2,4-D-CONTAINING PRODUCTS NOT AUTHORIZED FOR USE WITH ENLIST CORN AND SOYBEANS, MAY RESULT IN OFF-TARGET DAMAGE TO SENSITIVE CROPS/AREAS AND/OR SUSCEPTIBLE PLANTS, IN ADDITION TO CIVIL AND/OR CRIMINAL PENALTIES. Additional product-specific stewardship requirements for Enlist crops, including the Enlist Product Use Guide, can be found at www.traitstewardship.com. The transgenic soybean event in Enlist E3® soybeans is jointly developed and owned by Corteva Agriscience and M.S. Technologies, L.L.C.™ Trademarks of Corteva Agriscience and its affiliated companies.

STS®

herbicide tolerant trait

This variety contains a trait providing enhanced tolerance to labeled specific sulfonylurea soybean herbicides. The STS® gene will not safeguard this variety against other herbicide chemistries which are labeled to be used only over-the-top of crops that have a different and specified herbicide resistant gene. Always read and follow herbicide directions prior to use.

Not all herbicides are registered for sale or use in all states or counties in the United States or all provinces in Canada. Contact your local regulatory agency to determine if a product is registered for sale or use in your area. Always read and follow label directions.

ACCIDENTAL APPLICATION OF INCOMPATIBLE HERBICIDES TO THIS VARIETY COULD RESULT IN TOTAL CROP LOSS.

YOU MUST SIGN A TECHNOLOGY USE AGREEMENT AND READ THE PRODUCT USE GUIDE PRIOR TO PLANTING.

The purchase of these seeds includes a limited license to produce a single soybean crop in the United States (or other applicable country). The use of seed from such a crop or the progeny thereof for propagation or seed multiplication or for production or development of a hybrid or different variety of seed is strictly prohibited. Resale or transfer of the seed is strictly prohibited.