

WL 3451HQRR

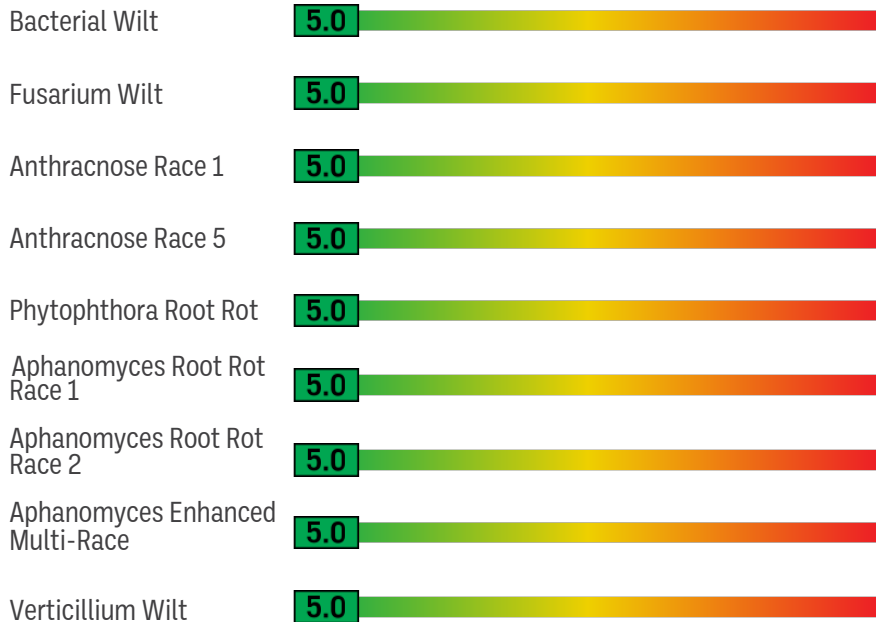


MATURITY | EARLY

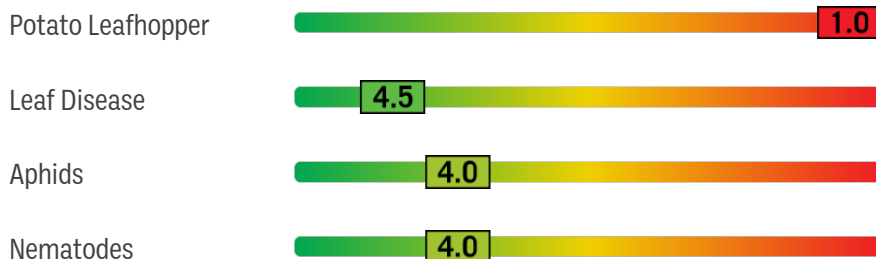
KEY POINTS

- » Enhanced yield potential with UltraCut™ alfalfa disease package
- » Excellent choice for heavy, compacted, or poorly drained soils
- » Very winterhardy
- » Use in a 3- to 5-cut system
- » Purchaser must have completed the appropriate technology licensing agreement

DISEASE PROFILE



INSECT PROFILE



Rating Scale: 5-1, 5 = Excellent, 1 = Poor, NA = Not Available, NR = No Rating

AGRONOMICS

Fall Dormancy	4.4
Winterhardiness	1.4
Treatment	Gold Treatment

GROWTH RATINGS

Forage Yield Index	Very High
Digestibility/Feed Value	Excellent
Persistence Index	Very High
Recovery After Harvest	Very Fast
Traffic Tolerance	Very Good
Standability	Excellent
Disease Resistance Index	40/40

HQ™

Roundup Ready[®]
ALFALFA

ULTRACUT™
Alfalfa Disease Package

Due to the unique cropping practices do not plant Roundup Ready® Alfalfa in Imperial County, California, pending import approvals and until Forage Genetics International, LLC (FGI) grants express permission for such planting.

IN THE FOLLOWING STATES, PURCHASE AND USE OF HARVXTRA® ALFALFA WITH ROUNDUP READY® TECHNOLOGY IS SUBJECT TO A SEED AND FEED USE AGREEMENT, REQUIRING THAT PRODUCTS OF THIS TECHNOLOGY CAN ONLY BE USED ON FARM OR OTHERWISE BE USED IN THE UNITED STATES: ARIZONA, CALIFORNIA, COLORADO, IDAHO, MONTANA, NEVADA, NEW MEXICO, OREGON, UTAH, WASHINGTON AND WYOMING (THE “WESTERN STATES”). IN ADDITION, DUE TO THE UNIQUE CROPPING PRACTICES DO NOT PLANT HARVXTRA® ALFALFA WITH ROUNDUP READY® TECHNOLOGY IN IMPERIAL COUNTY, CALIFORNIA, PENDING IMPORT APPROVALS AND UNTIL FORAGE GENETICS INTERNATIONAL, LLC (FGI) GRANTS EXPRESS PERMISSION FOR SUCH PLANTING.



Forage Genetics International, LLC (“FGI”) is a member of Excellence Through Stewardship® (ETS). FGI products are commercialized in accordance with ETS Product Launch Stewardship Guidance, and in compliance with FGI’s Policy for Commercialization of Biotechnology-Derived Plant Products in Commodity Crops. HarvXtra® Alfalfa with Roundup Ready® Technology has pending import approvals. GROWERS IN THE WESTERN STATES MUST DIRECT ANY PRODUCT PRODUCED FROM HARVXTRA® ALFALFA WITH ROUNDUP READY® TECHNOLOGY SEED OR CROPS (INCLUDING HAY AND HAY PRODUCTS) ONLY TO UNITED STATES DOMESTIC USE.

Any crop or material produced from this product can only be exported to, or used, processed or sold in countries where all necessary regulatory approvals have been granted. It is a violation of national and international law to move material containing biotech traits across boundaries into nations where import is not permitted. Growers should talk to their grain handler or product purchaser to confirm their buying position for this product. Growers should refer to <http://www.biotradestatus.com/> for any updated information on import country approvals. Excellence Through Stewardship® is a registered trademark of Excellence Through Stewardship.

ALWAYS READ AND FOLLOW PESTICIDE LABEL DIRECTIONS. Roundup Ready® crops contain genes that confer tolerance to glyphosate. Glyphosate herbicides will kill crops that are not tolerant to glyphosate. Roundup Ready® is a registered trademark of Bayer Group, used under license by Forage Genetics International, LLC. HarvXtra® is a registered trademark of Forage Genetics International, LLC. HarvXtra® Alfalfa with Roundup Ready® Technology is enabled with Technology from The Samuel Roberts Noble Foundation, Inc.